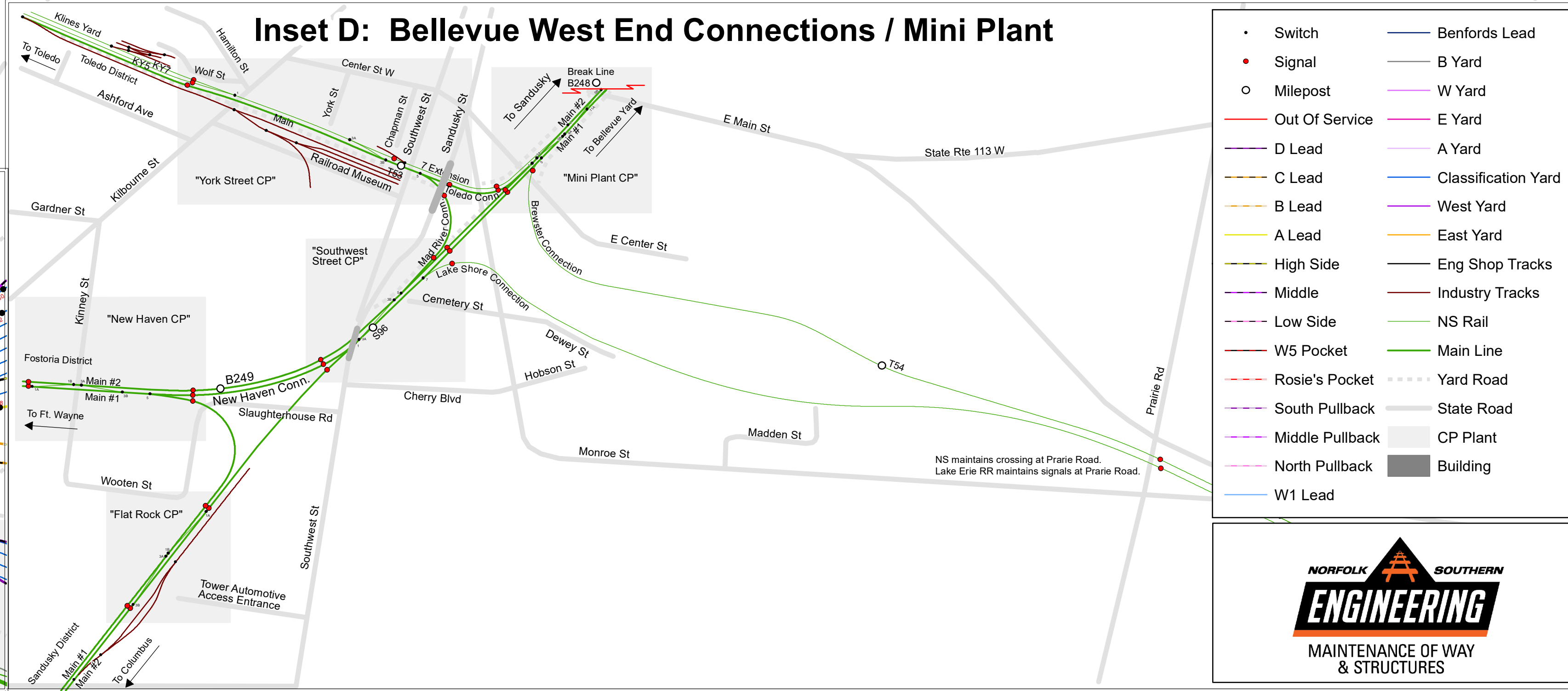
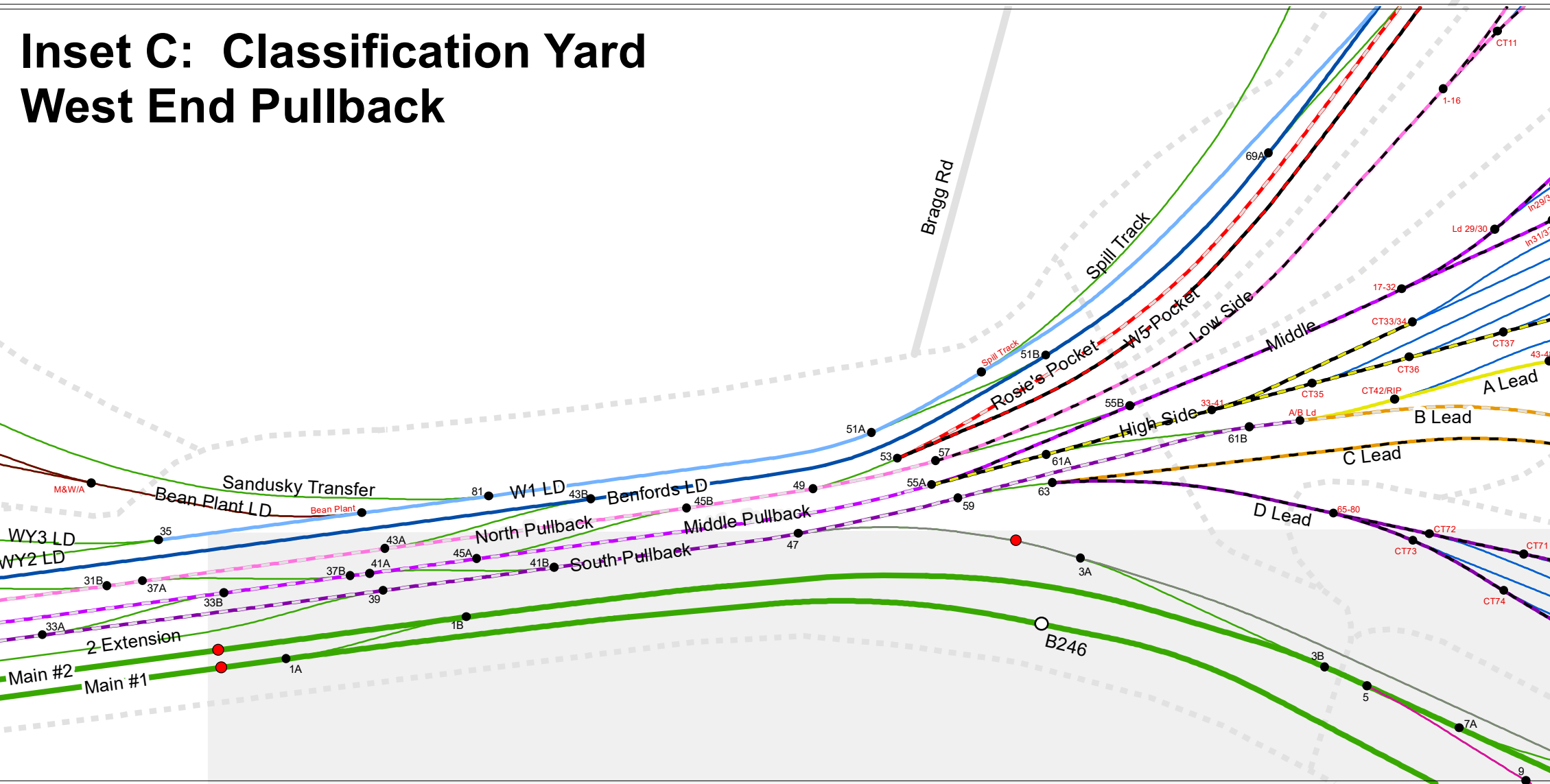
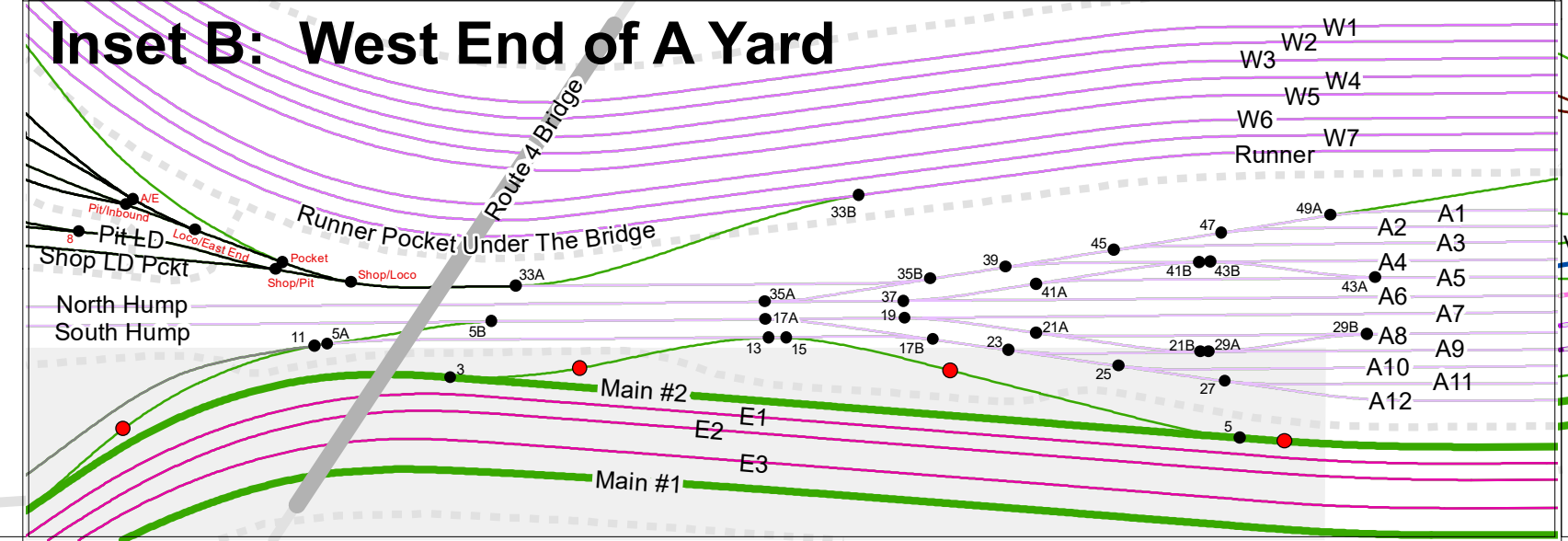
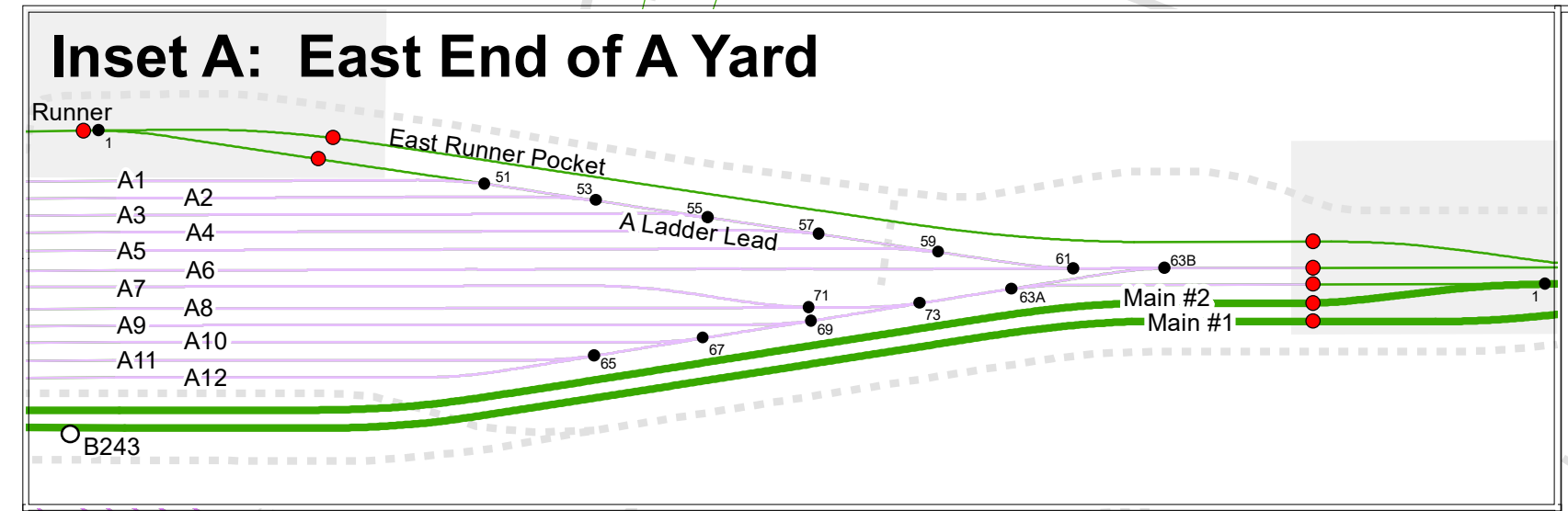
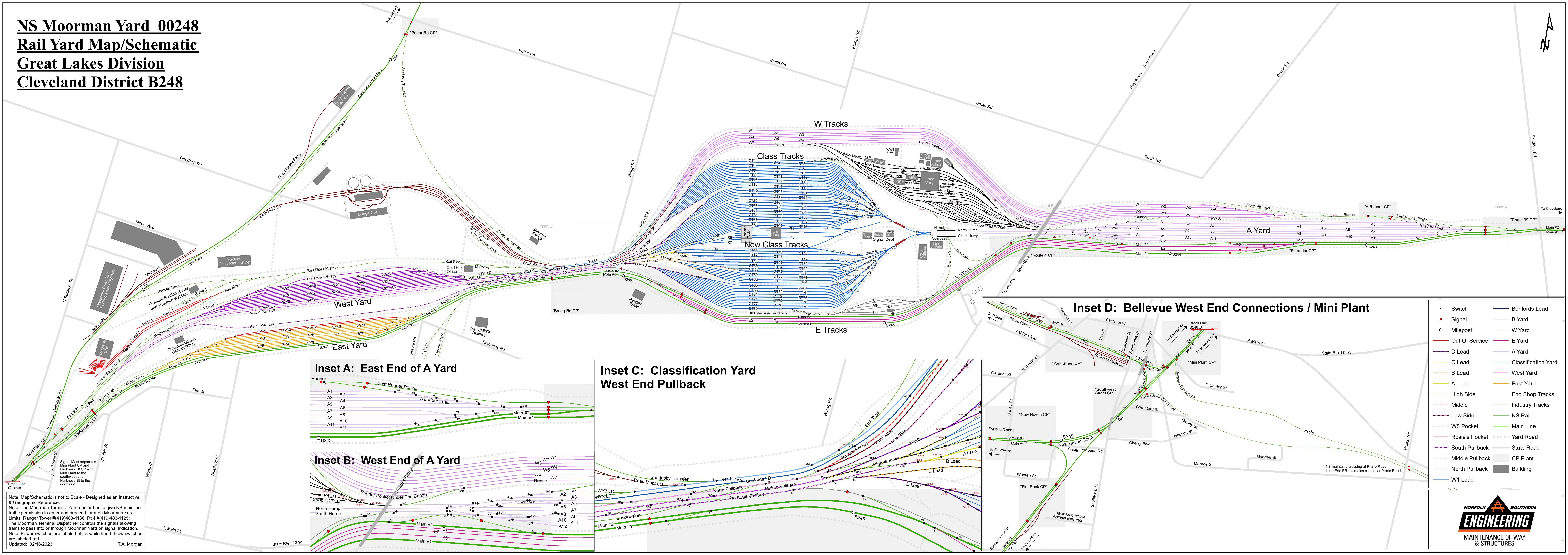


NS Moorman Yard 00248

Rail Yard Map/Schematic

Great Lakes Division

Cleveland District B248



- Switch
- Signal
- Milepost
- Out Of Service
- D Lead
- C Lead
- B Lead
- A Lead
- High Side
- Middle
- Low Side
- W5 Pocket
- Rosie's Pocket
- South Pullback
- Middle Pullback
- North Pullback
- W1 Lead
- Benfords Lead
- B Yard
- W Yard
- E Yard
- A Yard
- Classification Yard
- West Yard
- East Yard
- Eng Shop Tracks
- Industry Tracks
- NS Rail
- Main Line
- Yard Road
- State Road
- CP Plant
- Building

Note: Map/Schematic is not to Scale - Designed as an Instructive & Geographic Reference.
 Note: The Moorman Terminal Yardmaster has to give NS mainline traffic permission to enter and proceed through Moorman Yard Limits: Ranger Tower #419483-1186; Rt 4 #419483-1125. The Moorman Terminal Dispatcher controls the signals allowing trains to pass into or through Moorman Yard on signal indication.
 Note: Power switches are labeled black while hand-throw switches are labeled red.
 Updated: 02/16/2023
 T.A. Morgan

